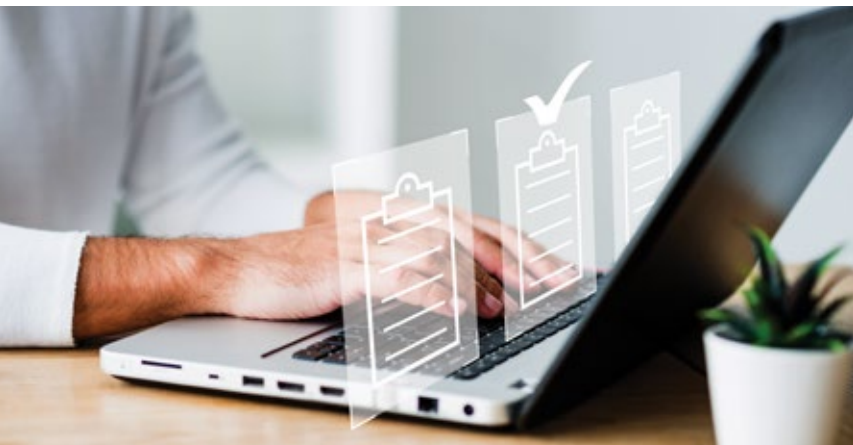
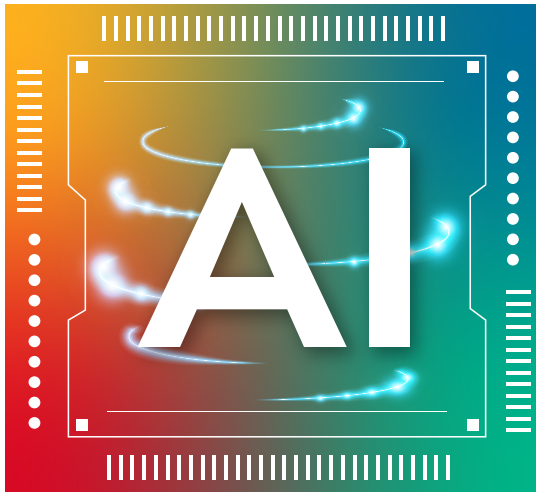


SCAN2

AI FEATURES

GENERIC DOCUMENT AI



Say **goodbye** to heaps of documents
and **hello** to simplified processes

Scan2x AI Feature: Generic Document AI - Unlocking the Power of Unseen Documents

In today's fast-paced business environment, the ability to efficiently process and extract valuable information from a wide range of documents is crucial.

Scan2x is excited to introduce its groundbreaking new AI feature: Generic Document AI, designed to revolutionise the way companies handle diverse and previously unseen documents.

The Challenge:

Imagine dealing with a 22-page VAT document containing various elements of data, each with valuable information. These documents can be handwritten or printed, and the challenge lies in extracting the relevant data accurately and efficiently.

Traditional methods fall short when faced with such diversity.

The Solution - Scan2x's Generic Document AI:

Scan2x's Generic Document AI feature is a game-changer.

It's designed to handle documents that the system has never encountered before, making it ideal for scenarios where document formats vary widely.

Here's how it works:

1



Intelligent Recognition: The AI within Scan2x doesn't rely on pre-defined templates. Instead, it scans the document for key information by recognising patterns and structures within the content.

2



Versatile Data Extraction: Scan2x identifies crucial data and understands that this information may be significant. It extracts this data, even from handwritten documents, with remarkable accuracy.

3



Adaptability: With Scan2x, you no longer need to preconfigure the system for each document type. It adapts on the fly, making it an invaluable tool for businesses dealing with a wide variety of documents.

Benefits to Companies:



Time and Cost Savings: Scan2x's Generic Document AI significantly reduces the time and cost associated with manual data entry and document processing. No more manual data extraction or lengthy setup processes.



Enhanced Accuracy: The AI-powered feature ensures a high level of accuracy in data extraction, minimising errors that can result from manual processing.



Scalability: Companies can scale their document processing capabilities without the need for extensive customisation or configuration. Scan2x adapts to new document types seamlessly.



Flexibility: Whether your documents are printed, handwritten, or a mix of both, Scan2x handles them with equal ease.

With Scan2x's new AI Feature - Generic Document AI, companies can overcome the challenges of dealing with diverse and unseen documents.

It unlocks efficiency, accuracy, and adaptability, ultimately streamlining document processing and enhancing productivity. Embrace the future of document management with Scan2x and stay ahead in the competitive business landscape.

Your local partner

Avantech Limited

Malta Office:

📍 Avantech Building, St. Julian's Road, San Gwann SGN2804

🌐 www.avantech.com.mt

☎ +356 2148 8800

UK Office

📍 6-9 The Square Stockley Park Uxbridge UB111FW United Kingdom

🌐 www.avantechsoftware.com

☎ +44 780-9757598 | 7809759530

Sales enquires: software@avantechsoftware.com

Technical support: support@avantechsoftware.com

[in](#) | Avantech Ltd [▶](#) | [@Avantechsoftware](#)



SCAN TO WATCH VIDEO

SCAN2

scan2x.com